



**NAMIBIA UNIVERSITY
OF SCIENCE AND TECHNOLOGY**

FACULTY OF HEALTH, NATURAL RESOURCES AND APPLIED SCIENCES

DEPARTMENT OF MATHEMATICS AND STATISTICS

QUALIFICATION: BACHELOR OF AGRICULTURAL MANAGEMENT	
QUALIFICATION CODE: 07BAGR	LEVEL: 5
COURSE CODE: AGS520S	COURSE NAME: AGRICULTURAL STATISTICS
SESSION: NOVEMBER 2022	PAPER: THEORY
DURATION: 3 HOURS	MARKS: 100

FIRST OPPORTUNITY EXAMINATION QUESTION PAPER	
EXAMINER	J. AMUNYELA
MODERATOR:	Mr A. ROUX

INSTRUCTIONS	
1. Answer ALL the questions in the booklet provided.	
2. Show clearly all the steps used in the calculations.	
3. All written work must be done in blue or black ink and sketches must be done in pencil.	
ATTACHMENT: Formula sheet, t-table, z-tables, chi-square table	

PERMISSIBLE MATERIALS

1. Non-programmable calculator without a cover.

THIS QUESTION PAPER CONSISTS OF 6 PAGES (Including this front page)

SECTION A

(Write down the letter corresponding to your choice next to the question number)

Question 1[20 Marks]

- 1.1.** When re-ordering, a shop owner is interested in ordering different milk flavour. Looking at the sales data, which measure of central tendency is useful to him?
- a) Mean
 - b) Median
 - c) Mode
 - d) All the above
- [2]
- 1.2.** A sample of a population is
- a) An experiment in the population
 - b) A subset of the population
 - c) A variable in the population
 - d) An outcome of the population
- [2]
- 1.3.** Which of the following is not a measure of central tendency in a statistical distribution?
- a) Mean
 - b) Median
 - c) Mode
 - d) Standard deviation
- [2]
- 1.4.** Fill in the blank to make the following sentence true. "The _____ of a particular outcome is the number of times it occurs within a specific sample of a population."
- a) Frequency
 - b) Variance
 - c) Mean deviation
 - d) Distribution
- [2]
- 1.5** Which of the following is NOT a possible probability?
- a) 25/100
 - b) 1.25
 - c) 1
 - d) 0
- [2]

- 1.6** Mathematical probabilities can have values
- a) Between -1 and 1 inclusive
 - b) Corresponding to any positive real number
 - c) Between 0 and 1 inclusive
 - d) Quotients of positive whole numbers or zero
- [2]
- 1.7** A student is chosen at random from a class of 16 girls and 14 boys. What is the probability that the student chosen is not a girl?
- a) $8/15$
 - b) $7/15$
 - c) 0.35
 - d) 0
- [2]
- 1.8** If you believe that the probability of purchasing a new tractor is dependent on getting a new higher paying job next year, the probability of purchasing the tractor is an example of:
- a) Simple probability
 - b) Conditional probability
 - c) Joint probability
 - d) Subjective probability
- [2]
- 1.9** The sampling technique whereby members of the population are placed in an array and every tenth member is selected is an example of: [2]
- a) Random sampling
 - b) Systematic sampling
 - c) Cluster sampling
 - d) Stratified sampling
- 1.10** You are doing research on farm personnel-orderlies, chief technicians, scientific officer, and implement operator. You want to be sure you draw a sample that has elements in each of the personnel categories. You want to use probability sampling. An appropriate strategy would be: [2]
- a) Simple random sampling
 - b) Quota sampling
 - c) Cluster sampling
 - d) Stratified sampling

SECTION B (Show all your working)

Question 2 [40 Marks]

2.1 Consider the following maximum temperature data for 10 winter days recorded in Otavi.

24, 37, 26, 46, 58, 30, 32, 13, 12, 38,

Calculate the following:

2.1.1 The mean. [2]

2.1.2 The median. [2]

2.1.3 The standard deviation. [5]

2.2 As part of disease control system the veterinary department has recorded the number of cases per farm related to food and mouth disease in various regions of the country during year 2021. The table below present the data

10	31	21	60	12	30	42	45	50	50	36
43	52	64	40	44	40	55	48	46	59	58
51	61	47	53	41	31	47	48	33	59	53
62	49	35	48	26	36	24	62	32	41	20

2.2.1 Using classes 10 to less than 20, 20 to less than 30, and 30 to less than 40, construct a frequency distribution table for the data. [7]

2.3 Let X be the random variable with the following probability distribution

X	1	2	4	6	7
P(X)	0.05	0.3	0.25	0.25	0.15

- 2.3.1 Estimate the mean for a random variable X [3]
- 2.3.2 Estimate the variance and the standard deviation for a random variable X [6]
- 2.3.3 Find $P(X > 4)$ [2]
- 2.4 The incidence of disease in a guava garden is such that 20% of the guava trees in the garden have the chance of being infected. If a random sample of six guava trees is selected,
- 2.4.1 what is the probability that at least three trees will have the symptoms of the disease [5]
- 2.4.2 what is the probability that at most two trees will have the symptoms of the disease [4]
- 2.4.3 what is the probability that exactly two trees will have the symptoms of the disease [2]
- 2.4.4 what is the average number of the infected trees [2]

Question 3 [20 Marks]

- 3.1 The Auditing procedures require you to have 95% confidence in estimating the population proportion of sales invoices with errors to within ± 0.07 of the true population proportion. The results from past month indicated that the largest proportion has been not more than 0.15. Find the sample size [4]
- 3.2 In a particular variety of wheat, leaf area is normally distributed with mean $\mu = 100 \text{ cm}^2$, and standard deviation $\sigma = 9 \text{ cm}^2$. If a random sample of 36 trees is considered, calculate the probability that the average area of the leaves is less than 100 cm^2 [3]
- 3.3 Milk yields of dairy cows generally follow a normal distribution. The monthly yield of a particular breed (Breed X) is believed to be normally distributed with a standard deviation $\sigma = 45 \text{ litres}$ when grazed without dietary supplements. Several farmers start feeding their Breed X cattle on experimental supplement. The monthly yield of a random sample of 35 of these cows shows a mean yield $\bar{x} = 220$ litres per month.

3.3.3 Construct and interpret a 95% confidence interval for estimating the actual milk yields of dairy cows [6]

3.4 The following data are of milk fat yield (kg) per month from 17 Holstein cows:
27, 17, 31, 20, 29, 22, 40, 28, 26, 28, 34, 32, 32, 32, 30, 23, 25

3.4.1 Use the data to construct a 98% confidence interval for the average milk fat yield of all Holstein cows [7]

Question 4 [20 Marks]

4.1 In a certain cattle-raising region of the country, it had become a practice among some farmers to feed their Breed X cows a protein supplement which, when fed to other dairy breeds, had never been known to do anything except increase milk yields. The monthly milk yields of a random sample of 50 protein-supplemented cows were recorded. The mean value \bar{x} was 209 litres and the population standard deviation was believed to be 40 litres.

4.1.1 Is there any reason to believe that the protein supplement has increased the average milk yield of Breed X cows to more than 200 litres? Use $\alpha = 5\%$

[10]

4.2 The eggs of the Cuckoo family have a length which is approximately normally distributed with mean of $\mu = 20 \text{ mm}$. The Cuckoo is a nest parasite, especially on nests of the Warbler family, the Sylviidae. Fifteen Cuckoo eggs were taken at random from nests of the Marsh Warbler. The length of these eggs (units mm) were,

19	20	20	20	20
20	21	21	21	21
21	22	22	22	22

4.2.1 Is there any evidence to suggest that the average length of the Cuckoo eggs in Marsh Warbler nests is different from the general population? Use $\alpha = 2\%$ [10]

FORMULA SHEET

$$M_e = L + \frac{c[0.5n-CF]}{f_{me}}$$

$$M_0 = L + \frac{c[f_m - f_{m-1}]}{2f_m - f_{m-1} - f_{m+1}}$$

$$\bar{x} = \frac{\sum fx}{n}$$

$$Z = \frac{\bar{x} - \mu}{\frac{\sigma}{\sqrt{n}}}$$

$$\bar{x} \pm Z_{\frac{\alpha}{2}} \left(\frac{\sigma}{\sqrt{n}} \right)$$

$$(p_1 - p_2) \pm Z_{\frac{\alpha}{2}} \left(\sqrt{\frac{p_1 q_1}{n_1} + \frac{p_2 q_2}{n_2}} \right)$$

$$t_{stat} = \frac{\bar{x} - \mu}{\frac{s}{\sqrt{n}}}$$

$$\frac{(n-1)S^2}{\chi^2_{\frac{\alpha}{2}, n-1}} < \sigma^2 < \frac{(n-1)S^2}{\chi^2_{1-\frac{\alpha}{2}, n-1}}$$

$$\chi^2_{stat} = \frac{(n-1)S^2}{\sigma^2}$$

$$\chi^2_{stat} = \sum \frac{(f_0 - f_e)^2}{f_e}$$

$$E(X) = \sum x_i p_i$$

$$V(X) = \sum (x_i - \mu)^2 p(x_i)$$

$$P(X = x) = \binom{n}{x} p^x q^{n-x}$$

$$n = \frac{Z^2(\sigma^2)}{E^2}$$

$$b = \frac{n \sum xy - \sum x \sum y}{n \sum x^2 - (\sum x)^2}$$

$$a = \bar{y} - b\bar{x}$$

$$\hat{\pi} = \frac{x_1 + x_2}{n_1 + n_2}$$

$$Z_{cal} = \frac{(p_1 - p_2) - (\pi_1 - \pi_2)}{\sqrt{\hat{\pi}(1-\hat{\pi}) \left(\frac{1}{n_1} + \frac{1}{n_2} \right)}}$$

$$\bar{x} = \frac{\sum x}{n}$$

$$s^2 = \frac{\sum (x_i - \bar{x})^2}{n-1}$$

$$n = \frac{z^2 p(1-p)}{E^2}$$

$$s^2 = \frac{\sum (x_i - \bar{x})^2 f_i}{n-1}$$

$$p \pm z \sqrt{\frac{pq}{n}}$$

$$\bar{x} \pm t_{\frac{\alpha}{2}, n-1} \left(\frac{s}{\sqrt{n}} \right)$$

$$Z = \frac{x - \mu}{\sigma}$$

$$(\bar{x}_A - \bar{x}_B) \pm t \sqrt{\frac{s_A^2}{n_A} + \frac{s_B^2}{n_B}}$$

$$P(X = k) = \frac{e^{-\theta} \theta^k}{k!}$$

$$t = \frac{(\bar{x}_1 - \bar{x}_2) - (\mu_1 - \mu_2)}{\sqrt{\frac{s_1^2}{n_1} + \frac{s_2^2}{n_2}}}$$

TABLE of CRITICAL VALUES for STUDENT'S *t* DISTRIBUTIONS

Column headings denote probabilities (α) above tabulated values.

d.f.	0.40	0.25	0.10	0.05	0.04	0.025	0.02	0.01	0.005	0.0025	0.001	0.0005
1	0.325	1.000	3.078	6.314	7.916	12.706	15.894	31.821	63.656	127.321	318.289	636.578
2	0.289	0.816	1.886	2.920	3.320	4.303	4.849	6.965	9.925	14.089	22.328	31.600
3	0.277	0.765	1.638	2.353	2.605	3.182	3.482	4.541	5.841	7.453	10.214	12.924
4	0.271	0.741	1.533	2.132	2.333	2.776	2.999	3.747	4.604	5.598	7.173	8.610
5	0.267	0.727	1.476	2.015	2.191	2.571	2.757	3.365	4.032	4.773	5.894	6.869
6	0.265	0.718	1.440	1.943	2.104	2.447	2.612	3.143	3.707	4.317	5.208	5.959
7	0.263	0.711	1.415	1.895	2.046	2.365	2.517	2.998	3.499	4.029	4.785	5.408
8	0.262	0.706	1.397	1.860	2.004	2.306	2.449	2.896	3.355	3.833	4.501	5.041
9	0.261	0.703	1.383	1.833	1.973	2.262	2.398	2.821	3.250	3.690	4.297	4.781
10	0.260	0.700	1.372	1.812	1.948	2.228	2.359	2.764	3.169	3.581	4.144	4.587
11	0.260	0.697	1.363	1.796	1.928	2.201	2.328	2.718	3.106	3.497	4.025	4.437
12	0.259	0.695	1.356	1.782	1.912	2.179	2.303	2.681	3.055	3.428	3.930	4.318
13	0.259	0.694	1.350	1.771	1.899	2.160	2.282	2.650	3.012	3.372	3.852	4.221
14	0.258	0.692	1.345	1.761	1.887	2.145	2.264	2.624	2.977	3.326	3.787	4.140
15	0.258	0.691	1.341	1.753	1.878	2.131	2.249	2.602	2.947	3.286	3.733	4.073
16	0.258	0.690	1.337	1.746	1.869	2.120	2.235	2.583	2.921	3.252	3.686	4.015
17	0.257	0.689	1.333	1.740	1.862	2.110	2.224	2.567	2.898	3.222	3.646	3.965
18	0.257	0.688	1.330	1.734	1.855	2.101	2.214	2.552	2.878	3.197	3.610	3.922
19	0.257	0.688	1.328	1.729	1.850	2.093	2.205	2.539	2.861	3.174	3.579	3.883
20	0.257	0.687	1.325	1.725	1.844	2.086	2.197	2.528	2.845	3.153	3.552	3.850
21	0.257	0.686	1.323	1.721	1.840	2.080	2.189	2.518	2.831	3.135	3.527	3.819
22	0.256	0.686	1.321	1.717	1.835	2.074	2.183	2.508	2.819	3.119	3.505	3.792
23	0.256	0.685	1.319	1.714	1.832	2.069	2.177	2.500	2.807	3.104	3.485	3.768
24	0.256	0.685	1.318	1.711	1.828	2.064	2.172	2.492	2.797	3.091	3.467	3.745
25	0.256	0.684	1.316	1.708	1.825	2.060	2.167	2.485	2.787	3.078	3.450	3.725
26	0.256	0.684	1.315	1.706	1.822	2.056	2.162	2.479	2.779	3.067	3.435	3.707
27	0.256	0.684	1.314	1.703	1.819	2.052	2.158	2.473	2.771	3.057	3.421	3.689
28	0.256	0.683	1.313	1.701	1.817	2.048	2.154	2.467	2.763	3.047	3.408	3.674
29	0.256	0.683	1.311	1.699	1.814	2.045	2.150	2.462	2.756	3.038	3.396	3.660
30	0.256	0.683	1.310	1.697	1.812	2.042	2.147	2.457	2.750	3.030	3.385	3.646
31	0.256	0.682	1.309	1.696	1.810	2.040	2.144	2.453	2.744	3.022	3.375	3.633
32	0.255	0.682	1.309	1.694	1.808	2.037	2.141	2.449	2.738	3.015	3.365	3.622
33	0.255	0.682	1.308	1.692	1.806	2.035	2.138	2.445	2.733	3.008	3.356	3.611
34	0.255	0.682	1.307	1.691	1.805	2.032	2.136	2.441	2.728	3.002	3.348	3.601
35	0.255	0.682	1.306	1.690	1.803	2.030	2.133	2.438	2.724	2.996	3.340	3.591
36	0.255	0.681	1.306	1.688	1.802	2.028	2.131	2.434	2.719	2.990	3.333	3.582
37	0.255	0.681	1.305	1.687	1.800	2.026	2.129	2.431	2.715	2.985	3.326	3.574
38	0.255	0.681	1.304	1.686	1.799	2.024	2.127	2.429	2.712	2.980	3.319	3.566
39	0.255	0.681	1.304	1.685	1.798	2.023	2.125	2.426	2.708	2.976	3.313	3.558
40	0.255	0.681	1.303	1.684	1.796	2.021	2.123	2.423	2.704	2.971	3.307	3.551
60	0.254	0.679	1.296	1.671	1.781	2.000	2.099	2.390	2.660	2.915	3.232	3.460
80	0.254	0.678	1.292	1.664	1.773	1.990	2.088	2.374	2.639	2.887	3.195	3.416
100	0.254	0.677	1.290	1.660	1.769	1.984	2.081	2.364	2.626	2.871	3.174	3.390
120	0.254	0.677	1.289	1.658	1.766	1.980	2.076	2.358	2.617	2.860	3.160	3.373
140	0.254	0.676	1.288	1.656	1.763	1.977	2.073	2.353	2.611	2.852	3.149	3.361
160	0.254	0.676	1.287	1.654	1.762	1.975	2.071	2.350	2.607	2.847	3.142	3.352
180	0.254	0.676	1.286	1.653	1.761	1.973	2.069	2.347	2.603	2.842	3.136	3.345
200	0.254	0.676	1.286	1.653	1.760	1.972	2.067	2.345	2.601	2.838	3.131	3.340
250	0.254	0.675	1.285	1.651	1.758	1.969	2.065	2.341	2.596	2.832	3.123	3.330
inf	0.253	0.674	1.282	1.645	1.751	1.960	2.054	2.326	2.576	2.807	3.090	3.290

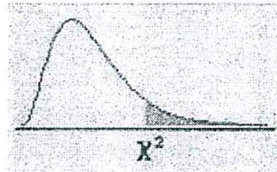
Z - Table

The table shows cumulative probabilities for the standard normal curve.

Cumulative probabilities for **NEGATIVE** z-values are shown first. **SCROLL DOWN** to the 2nd page for **POSITIVE** z

z	.00	.01	.02	.03	.04	.05	.06	.07	.08	.09
-3.4	.0003	.0003	.0003	.0003	.0003	.0003	.0003	.0003	.0003	.0002
-3.3	.0005	.0005	.0005	.0004	.0004	.0004	.0004	.0004	.0004	.0003
-3.2	.0007	.0007	.0006	.0006	.0006	.0006	.0006	.0005	.0005	.0005
-3.1	.0010	.0009	.0009	.0009	.0008	.0008	.0008	.0008	.0007	.0007
-3.0	.0013	.0013	.0013	.0012	.0012	.0011	.0011	.0011	.0010	.0010
-2.9	.0019	.0018	.0018	.0017	.0016	.0016	.0015	.0015	.0014	.0014
-2.8	.0026	.0025	.0024	.0023	.0023	.0022	.0021	.0021	.0020	.0019
-2.7	.0035	.0034	.0033	.0032	.0031	.0030	.0029	.0028	.0027	.0026
-2.6	.0047	.0045	.0044	.0043	.0041	.0040	.0039	.0038	.0037	.0036
-2.5	.0062	.0060	.0059	.0057	.0055	.0054	.0052	.0051	.0049	.0048
-2.4	.0082	.0080	.0078	.0075	.0073	.0071	.0069	.0068	.0066	.0064
-2.3	.0107	.0104	.0102	.0099	.0096	.0094	.0091	.0089	.0087	.0084
-2.2	.0139	.0136	.0132	.0129	.0125	.0122	.0119	.0116	.0113	.0110
-2.1	.0179	.0174	.0170	.0166	.0162	.0158	.0154	.0150	.0146	.0143
-2.0	.0228	.0222	.0217	.0212	.0207	.0202	.0197	.0192	.0188	.0183
-1.9	.0287	.0281	.0274	.0268	.0262	.0256	.0250	.0244	.0239	.0233
-1.8	.0359	.0351	.0344	.0336	.0329	.0322	.0314	.0307	.0301	.0294
-1.7	.0446	.0436	.0427	.0418	.0409	.0401	.0392	.0384	.0375	.0367
-1.6	.0548	.0537	.0526	.0516	.0505	.0495	.0485	.0475	.0465	.0455
-1.5	.0668	.0655	.0643	.0630	.0618	.0606	.0594	.0582	.0571	.0559
-1.4	.0808	.0793	.0778	.0764	.0749	.0735	.0721	.0708	.0694	.0681
-1.3	.0968	.0951	.0934	.0918	.0901	.0885	.0869	.0853	.0838	.0823
-1.2	.1151	.1131	.1112	.1093	.1075	.1056	.1038	.1020	.1003	.0985
-1.1	.1357	.1335	.1314	.1292	.1271	.1251	.1230	.1210	.1190	.1170
-1.0	.1587	.1562	.1539	.1515	.1492	.1469	.1446	.1423	.1401	.1379
-0.9	.1841	.1814	.1788	.1762	.1736	.1711	.1685	.1660	.1635	.1611
-0.8	.2119	.2090	.2061	.2033	.2005	.1977	.1949	.1922	.1894	.1867
-0.7	.2420	.2389	.2358	.2327	.2296	.2266	.2236	.2206	.2177	.2148
-0.6	.2743	.2709	.2676	.2643	.2611	.2578	.2546	.2514	.2483	.2451
-0.5	.3085	.3050	.3015	.2981	.2946	.2912	.2877	.2843	.2810	.2776
-0.4	.3446	.3409	.3372	.3336	.3300	.3264	.3228	.3192	.3156	.3121
-0.3	.3821	.3783	.3745	.3707	.3669	.3632	.3594	.3557	.3520	.3483
-0.2	.4207	.4168	.4129	.4090	.4052	.4013	.3974	.3936	.3897	.3859
-0.1	.4602	.4562	.4522	.4483	.4443	.4404	.4364	.4325	.4286	.4247
0.0	.5000	.4960	.4920	.4880	.4840	.4801	.4761	.4721	.4681	.4641

APPENDIX E: The Chi-Square Distribution



df	.995	.990	.975	.950	.900	.750	.500	.250	.100	.050	.025	.010	.005
1	0.00004	0.00016	0.00098	0.00393	0.01579	0.10153	0.45494	1.32330	2.70554	3.84146	5.02389	6.63490	7.87944
2	0.01003	0.02010	0.05064	0.10259	0.21072	0.57536	1.38629	2.77259	4.60517	5.99146	7.37776	9.21034	10.59663
3	0.07172	0.11483	0.21580	0.35185	0.58437	1.21253	2.36597	4.10834	6.25139	7.81473	9.34840	11.34487	12.83816
4	0.20699	0.29711	0.48442	0.71072	1.06362	1.92256	3.35669	5.38527	7.77944	9.48773	11.14329	13.27670	14.86026
5	0.41174	0.55430	0.83121	1.14548	1.61031	2.67460	4.35146	6.62568	9.23636	11.07050	12.83250	15.08627	16.74960
6	0.67573	0.87209	1.23734	1.63538	2.20413	3.45460	5.34812	7.84080	10.64464	12.59159	14.44938	16.81189	18.54758
7	0.98926	1.23904	1.68987	2.16735	2.83311	4.25485	6.34581	9.03715	12.01704	14.06714	16.01276	18.47531	20.27774
8	1.34441	1.64650	2.17973	2.73264	3.48954	5.07064	7.34412	10.21885	13.36157	15.50731	17.53455	20.09024	21.95495
9	1.73493	2.08790	2.70039	3.32511	4.16816	5.89883	8.34283	11.38875	14.68366	16.91898	19.02277	21.66599	23.58935
10	2.15586	2.55821	3.24697	3.94030	4.86518	6.73720	9.34182	12.54886	15.98718	18.30704	20.48318	23.20925	25.18818
11	2.60322	3.05348	3.81575	4.57481	5.57778	7.58414	10.34100	13.70069	17.27501	19.67514	21.92005	24.72497	26.75685
12	3.07382	3.57057	4.40379	5.22603	6.30380	8.43842	11.34032	14.84540	18.54935	21.02607	23.33666	26.21697	28.29952
13	3.56503	4.10692	5.00875	5.89186	7.04150	9.29907	12.33976	15.98391	19.81193	22.36203	24.73560	27.68825	29.81947
14	4.07467	4.66043	5.62873	6.57063	7.78953	10.16531	13.33927	17.11693	21.06414	23.68479	26.11895	29.14124	31.31935
15	4.60092	5.22935	6.26214	7.26094	8.54676	11.03654	14.33886	18.24509	22.30713	24.99579	27.48839	30.57791	32.80132
16	5.14221	5.81221	6.90766	7.96165	9.31224	11.91222	15.33850	19.36886	23.54183	26.29623	28.84535	31.99993	34.26719
17	5.69722	6.40776	7.56419	8.67176	10.08519	12.79193	16.33818	20.48868	24.76904	27.58711	30.19101	33.40866	35.71847
18	6.26480	7.01491	8.23075	9.39046	10.86494	13.67529	17.33790	21.60489	25.98942	28.86930	31.52638	34.80531	37.15645
19	6.84397	7.63273	8.90652	10.11701	11.65091	14.56200	18.33765	22.71781	27.20357	30.14353	32.85233	36.19087	38.58226
20	7.43384	8.26040	9.59078	10.85081	12.44261	15.45177	19.33743	23.82769	28.41198	31.41043	34.16961	37.56623	39.99685
21	8.03365	8.89720	10.28290	11.59131	13.23960	16.34438	20.33723	24.93478	29.61509	32.67057	35.47888	38.93217	41.40106
22	8.64272	9.54249	10.98232	12.33801	14.04149	17.23962	21.33704	26.03927	30.81328	33.92444	36.78071	40.28936	42.79565
23	9.26042	10.19572	11.68855	13.09051	14.84796	18.13730	22.33688	27.14134	32.00690	35.17246	38.07563	41.63840	44.18128
24	9.88623	10.85636	12.40115	13.84843	15.65868	19.03725	23.33673	28.24115	33.19624	36.41503	39.36408	42.97982	45.55851
25	10.51965	11.52398	13.11972	14.61141	16.47341	19.93934	24.33659	29.33885	34.38159	37.65248	40.64647	44.31410	46.92789
26	11.16024	12.19815	13.84390	15.37916	17.29188	20.84343	25.33646	30.43457	35.56317	38.88514	41.92317	45.64168	48.28988
27	11.80759	12.87850	14.57338	16.15140	18.11390	21.74940	26.33634	31.52841	36.74122	40.11327	43.19451	46.96294	49.64492
28	12.46134	13.56471	15.30786	16.92788	18.93924	22.65716	27.33623	32.62049	37.91592	41.33714	44.46079	48.27824	50.99338
29	13.12115	14.25645	16.04707	17.70837	19.76774	23.56659	28.33613	33.71091	39.08747	42.55697	45.72229	49.58788	52.33562
30	13.78672	14.95346	16.79077	18.49266	20.59923	24.47761	29.33603	34.79974	40.25602	43.77297	46.97924	50.89218	53.67196